



GAT MONTHLY MEMBERSHIP PROGRESS REPORT

Results as of: 5/31/2024

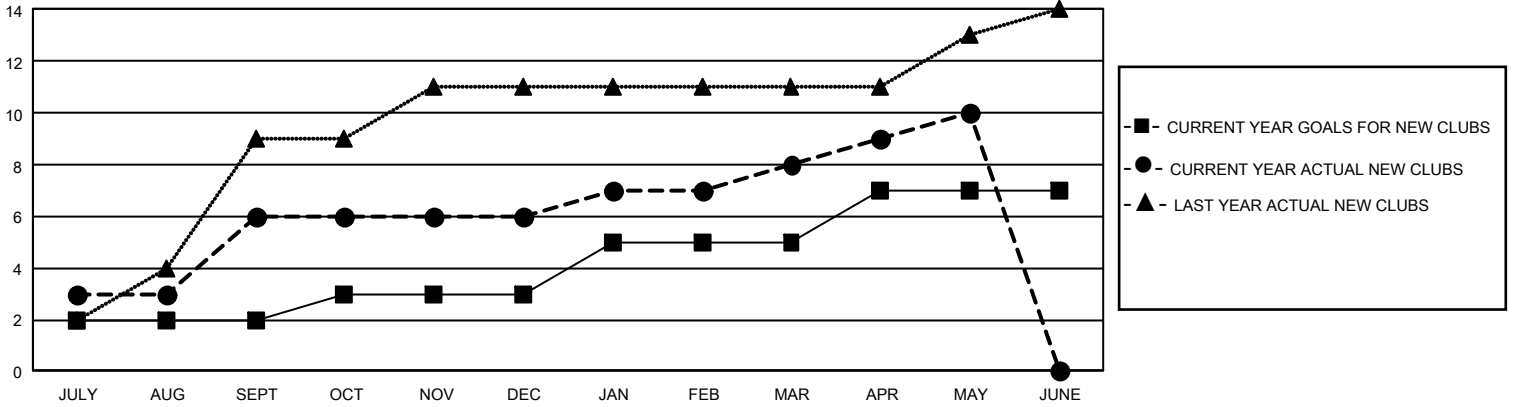
GMT Constitutional Area 5 - E, Group P

REPORT DOES NOT INCLUDE CLUBS IN UNDISTRICTED AREAS.

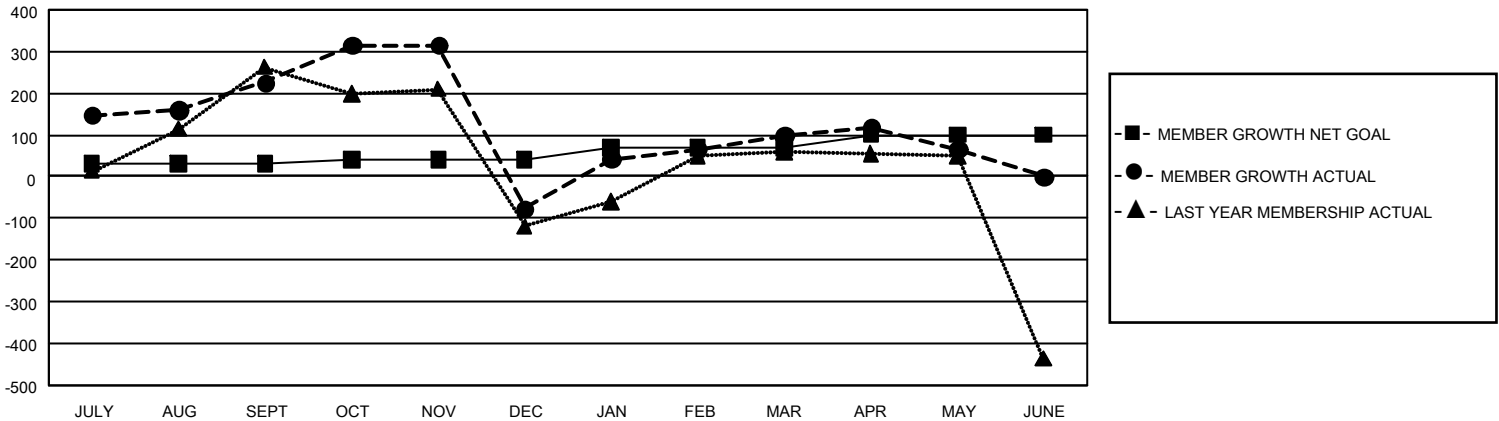
Clubs			
RESULTS FOR 2023-2024			
QUARTER	NEW CLUB GOAL	NEW CLUBS	DROPPED CLUBS
JULY/AUG/SEPT	6	6	3
OCT/NOV/DEC	3	0	5
JAN/FEB/MAR	6	2	4
APR/MAY/JUNE	6	2	0

Members			
RESULTS FOR 2023-2024			
QUARTER	MEMBER GROWTH NET GOAL	MEMBER GROWTH ACTUAL	DROPPED MEMBERS ACTUAL (including transfers)
JULY/AUG/SEPT	30	392	135
OCT/NOV/DEC	10	204	489
JAN/FEB/MAR	30	243	53
APR/MAY/JUNE	30	116	138

GOALS AND ACTUAL NEW CLUBS CUMULATIVE



GOALS AND ACTUAL MEMBERS CUMULATIVE



DROPPED CLUBS: 12 DROPPED MEMBERS DECEASED 32 CLUB CANCELLED 32 OTHER 751 TOTAL 815	167 CLUBS OF 314 ADDED 1 OR MORE NEW MEMBERS	GENDER DISTRIBUTION MALE 3,279 (46.75%) FEMALE 3,735 (53.25%) NON BINARY 0 (0.00%) PREFER NOT TO ANSWER 0 (0.00%)
	CLICK HERE FOR CUMULATIVE MEMBERSHIP DATA	TOTAL FAMILY UNIT MEMBERS 513 FAMILY MEMBERS PAYING HALF DUES 273